

Spare parts list

Bosch Rexroth AG
Service Hydraulics
Glockeraustrasse 4
89275 Elchingen
Germany

Material number: R902462382
Drawing: R902462365
Designation: AXIAL-PISTON PUMP
AL A10V O 60 DFR1/52L-VUC11N00 -S2405

Status of version: 08/2025

Date: 16.09.2025

Page: 1

| Pos. | Material number | Designation | Quantity | |
|------|-----------------|---------------|----------|---|
| 1 | R902462150 | BASE UNIT | 1 UNIT | L |
| 2 | R902454060 | CONTROL VALVE | 1 UNIT | L |

L = Assembly group D = Sealing element

Security notice:

Assembly, commissioning and operation, disassembly, service (including maintenance and repair) require basic mechanical/electrical/hydraulic/pneumatic knowledge, as well as knowledge of the appropriate technical terms. In order to ensure operating safety, these activities may therefore only be carried out by qualified technical personnel or an instructed person under the direction and supervision of qualified personnel. Qualified personnel are those who can recognize possible hazards and institute the appropriate safety measures due to their professional training, knowledge, and experience, as well as their understanding of the relevant conditions pertaining to the work to be done. Qualified personnel must observe the rules relevant to the subject area. Also observe the generally applicable, legal or otherwise binding regulations of the European or national legislation and the rules for the prevention of accidents and for environmental protection applicable in your country. The data specified above only serve to describe the product. No statements concerning a certain condition or suitability for a certain application can be derived from our information. The given information does not release the user from the obligation of own judgement and verification. It must be remembered that our products are subject to a natural process of wear and aging.

©This document, as well as the data, specifications and other information set forth in it, are the exclusive property of Bosch Rexroth AG. Without their consent it may not be reproduced or given to third parties.

Spare parts list

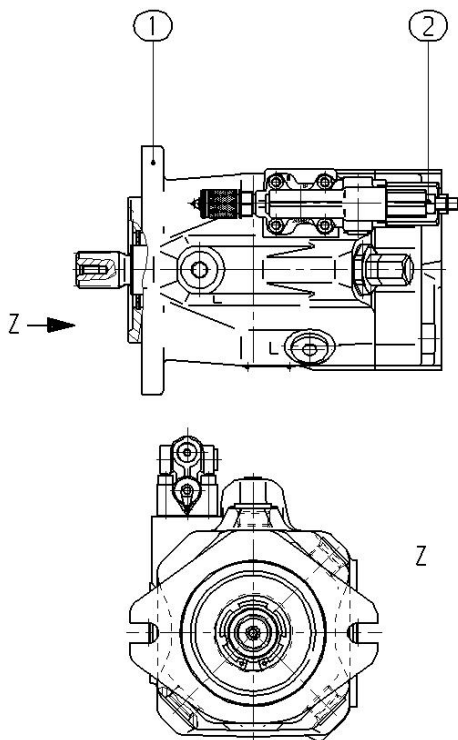
Material number: R902462382
Drawing: R902462365
Designation: AXIAL-PISTON PUMP
AL A10V O 60 DFR1/52L-VUC11N00 -S2405

Bosch Rexroth AG
Service Hydraulics
Glockeraustrasse 4
89275 Elchingen
Germany

Status of version: 08/2025

Date: 16.09.2025

Page: 2



L = Assembly group D = Sealing element

Security notice:

Assembly, commissioning and operation, disassembly, service (including maintenance and repair) require basic mechanical/electrical/hydraulic/pneumatic knowledge, as well as knowledge of the appropriate technical terms. In order to ensure operating safety, these activities may therefore only be carried out by qualified technical personnel or an instructed person under the direction and supervision of qualified personnel. Qualified personnel are those who can recognize possible hazards and institute the appropriate safety measures due to their professional training, knowledge, and experience, as well as their understanding of the relevant conditions pertaining to the work to be done. Qualified personnel must observe the rules relevant to the subject area. Also observe the generally applicable, legal or otherwise binding regulations of the European or national legislation and the rules for the prevention of accidents and for environmental protection applicable in your country. The data specified above only serve to describe the product. No statements concerning a certain condition or suitability for a certain application can be derived from our information. The given information does not release the user from the obligation of own judgement and verification. It must be remembered that our products are subject to a natural process of wear and aging.

©This document, as well as the data, specifications and other information set forth in it, are the exclusive property of Bosch Rexroth AG. Without their consent it may not be reproduced or given to third parties.

Spare parts list

Bosch Rexroth AG
Service Hydraulics
Glockeraustrasse 4
89275 Elchingen
Germany

Material number: R902462150
Drawing: R902463787
Designation: BASE UNIT

Status of version: 08/2025

Date: 16.09.2025

Page: 3

| Pos. | Material number | Designation | Quantity | |
|------|-----------------|------------------------|----------|---|
| 1 | R902454129 | ROTARY GROUP | 1 UNIT | L |
| 2 | R902438263 | ADJUSTING PISTON | 1 UNIT | |
| 3 | R902439068 | PISTON ROD | 1 UNIT | |
| 4 | R902419471 | PUMP HOUSING | 1 UNIT | |
| 6 | R910979582 | CONNECTION PLATE | 1 UNIT | |
| 7 | R902437116 | SWASH PLATE | 1 UNIT | |
| 8 | R910992482 | DRIVE SHAFT | 1 UNIT | |
| 9 | R902555080 | SCREW PLUG | 1 UNIT | |
| 10 | R910973548 | COMPRESSION SPRING | 1 UNIT | |
| 12 | R910966528 | ADJUSTMENT SHIM | 1 UNIT | |
| 14 | R910989235 | STOP RING | 1 UNIT | |
| 15 | R910720224 | TAPERED-ROLLER BEARING | 1 UNIT | |
| 16 | R910973501 | TAPERED-ROLLER BEARING | 1 UNIT | |
| 17 | R902413637 | BEARING SHELL | 1 UNIT | |
| 18 | R902413636 | BEARING SHELL | 1 UNIT | |
| 20 | R909831661 | SHAFT SEALING RING | 1 UNIT | D |
| 21 | R913050498 | O-RING | 1 UNIT | D |
| 22 | R910965435 | O-RING | 1 UNIT | D |

L = Assembly group D = Sealing element

Security notice:

Assembly, commissioning and operation, disassembly, service (including maintenance and repair) require basic mechanical/electrical/hydraulic/pneumatic knowledge, as well as knowledge of the appropriate technical terms. In order to ensure operating safety, these activities may therefore only be carried out by qualified technical personnel or an instructed person under the direction and supervision of qualified personnel. Qualified personnel are those who can recognize possible hazards and institute the appropriate safety measures due to their professional training, knowledge, and experience, as well as their understanding of the relevant conditions pertaining to the work to be done. Qualified personnel must observe the rules relevant to the subject area. Also observe the generally applicable, legal or otherwise binding regulations of the European or national legislation and the rules for the prevention of accidents and for environmental protection applicable in your country. The data specified above only serve to describe the product. No statements concerning a certain condition or suitability for a certain application can be derived from our information. The given information does not release the user from the obligation of own judgement and verification. It must be remembered that our products are subject to a natural process of wear and aging.

©This document, as well as the data, specifications and other information set forth in it, are the exclusive property of Bosch Rexroth AG. Without their consent it may not be reproduced or given to third parties.

Spare parts list

Bosch Rexroth AG
Service Hydraulics
Glockeraustrasse 4
89275 Elchingen
Germany

Material number: R902462150
Drawing: R902463787
Designation: BASE UNIT

Status of version: 08/2025

Date: 16.09.2025

Page: 4

| Pos. | Material number | Designation | Quantity | |
|------|-----------------|------------------------|----------|---|
| 23 | R910804886 | O-RING | 2 UNIT | |
| 24 | R910942133 | R-RING | 2 UNIT | D |
| 25 | R910941918 | RETAINING RING | 1 UNIT | |
| 27 | R910604976 | SOCKET HEAD CAP SCREW | 4 UNIT | |
| 31 | R902584425 | DOUBLE BREAK-OFF PLUG | 2 UNIT | |
| 33 | R902587222 | STRAIGHT PIN | 1 UNIT | |
| 34 | R910967343 | SCREW PLUG | 3 UNIT | |
| 35 | R910998240 | NUT | 1 UNIT | |
| 36 | R910904041 | CAP NUT | 1 UNIT | |
| 37 | R902532354 | STOP SCREW | 1 UNIT | |
| 40 | R910993660 | COUNTERSUNK-HEAD SCREW | 2 UNIT | |

L = Assembly group D = Sealing element

Security notice:

Assembly, commissioning and operation, disassembly, service (including maintenance and repair) require basic mechanical/electrical/hydraulic/pneumatic knowledge, as well as knowledge of the appropriate technical terms. In order to ensure operating safety, these activities may therefore only be carried out by qualified technical personnel or an instructed person under the direction and supervision of qualified personnel. Qualified personnel are those who can recognize possible hazards and institute the appropriate safety measures due to their professional training, knowledge, and experience, as well as their understanding of the relevant conditions pertaining to the work to be done. Qualified personnel must observe the rules relevant to the subject area. Also observe the generally applicable, legal or otherwise binding regulations of the European or national legislation and the rules for the prevention of accidents and for environmental protection applicable in your country. The data specified above only serve to describe the product. No statements concerning a certain condition or suitability for a certain application can be derived from our information. The given information does not release the user from the obligation of own judgement and verification. It must be remembered that our products are subject to a natural process of wear and aging.

©This document, as well as the data, specifications and other information set forth in it, are the exclusive property of Bosch Rexroth AG. Without their consent it may not be reproduced or given to third parties.

Spare parts list

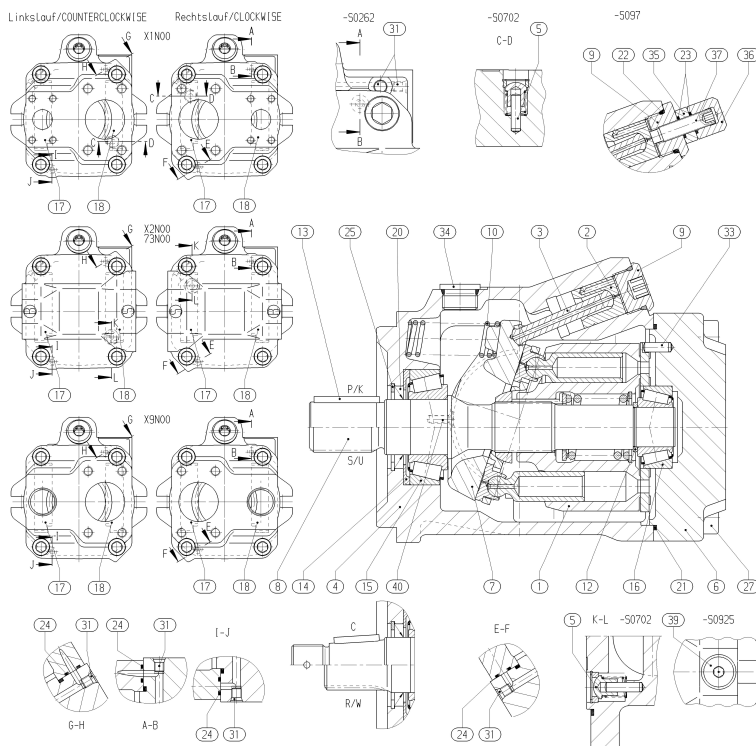
Material number: R902462150
Drawing: R902463787
Designation: BASE UNIT

Bosch Rexroth AG
Service Hydraulics
Glockeraustrasse 4
89275 Elchingen
Germany

Status of version: 08/2025

Date: 16.09.2025

Page: 5



L = Assembly group D = Sealing element

Security notice:

Assembly, commissioning and operation, disassembly, service (including maintenance and repair) require basic mechanical/electrical/hydraulic/pneumatic knowledge, as well as knowledge of the appropriate technical terms. In order to ensure operating safety, these activities may therefore only be carried out by qualified technical personnel or an instructed person under the direction and supervision of qualified personnel. Qualified personnel are those who can recognize possible hazards and institute the appropriate safety measures due to their professional training, knowledge, and experience, as well as their understanding of the relevant conditions pertaining to the work to be done. Qualified personnel must observe the rules relevant to the subject area. Also observe the generally applicable, legal or otherwise binding regulations of the European or national legislation and the rules for the prevention of accidents and for environmental protection applicable in your country. The data specified above only serve to describe the product. No statements concerning a certain condition or suitability for a certain application can be derived from our information. The given information does not release the user from the obligation of own judgement and verification. It must be remembered that our products are subject to a natural process of wear and aging.

©This document, as well as the data, specifications and other information set forth in it, are the exclusive property of Bosch Rexroth AG. Without their consent it may not be reproduced or given to third parties.

Spare parts list

Bosch Rexroth AG
Service Hydraulics
Glockeraustrasse 4
89275 Elchingen
Germany

Material number: R902454129
Drawing: R910991519
Designation: ROTARY GROUP

Status of version: 08/2025

Date: 16.09.2025

Page: 6

| Pos. | Material number | Designation | Quantity | |
|------|-----------------|-------------------|----------|---|
| 1 | R910993591 | ROTARY GROUP | 1 UNIT | L |
| 2 | R902451806 | DISTRIBUTOR PLATE | 1 UNIT | |

L = Assembly group D = Sealing element

Security notice:

Assembly, commissioning and operation, disassembly, service (including maintenance and repair) require basic mechanical/electrical/hydraulic/pneumatic knowledge, as well as knowledge of the appropriate technical terms. In order to ensure operating safety, these activities may therefore only be carried out by qualified technical personnel or an instructed person under the direction and supervision of qualified personnel. Qualified personnel are those who can recognize possible hazards and institute the appropriate safety measures due to their professional training, knowledge, and experience, as well as their understanding of the relevant conditions pertaining to the work to be done. Qualified personnel must observe the rules relevant to the subject area. Also observe the generally applicable, legal or otherwise binding regulations of the European or national legislation and the rules for the prevention of accidents and for environmental protection applicable in your country. The data specified above only serve to describe the product. No statements concerning a certain condition or suitability for a certain application can be derived from our information. The given information does not release the user from the obligation of own judgement and verification. It must be remembered that our products are subject to a natural process of wear and aging.

©This document, as well as the data, specifications and other information set forth in it, are the exclusive property of Bosch Rexroth AG. Without their consent it may not be reproduced or given to third parties.

Spare parts list

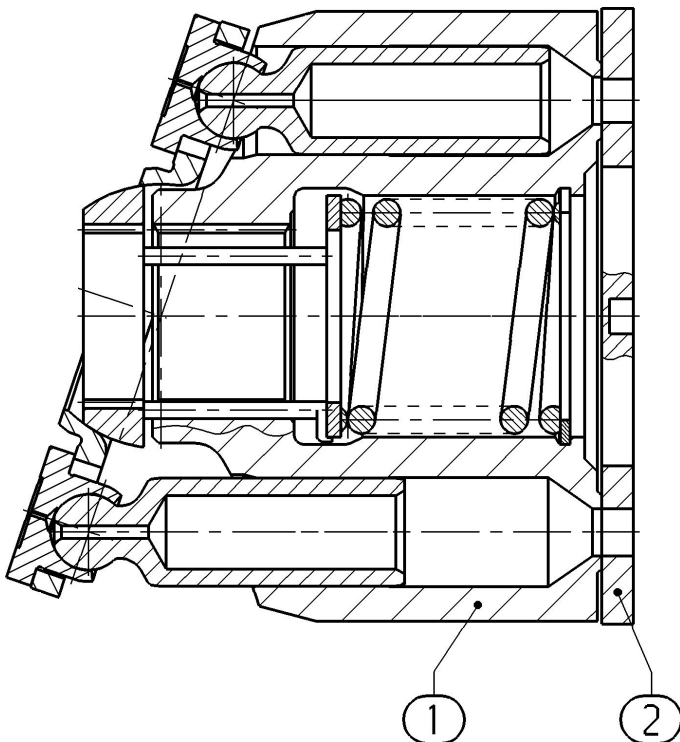
Material number: R902454129
Drawing: R910991519
Designation: ROTARY GROUP

Bosch Rexroth AG
Service Hydraulics
Glockeraustrasse 4
89275 Elchingen
Germany

Status of version: 08/2025

Date: 16.09.2025

Page: 7



L = Assembly group D = Sealing element

Security notice:

Assembly, commissioning and operation, disassembly, service (including maintenance and repair) require basic mechanical/electrical/hydraulic/pneumatic knowledge, as well as knowledge of the appropriate technical terms. In order to ensure operating safety, these activities may therefore only be carried out by qualified technical personnel or an instructed person under the direction and supervision of qualified personnel. Qualified personnel are those who can recognize possible hazards and institute the appropriate safety measures due to their professional training, knowledge, and experience, as well as their understanding of the relevant conditions pertaining to the work to be done. Qualified personnel must observe the rules relevant to the subject area. Also observe the generally applicable, legal or otherwise binding regulations of the European or national legislation and the rules for the prevention of accidents and for environmental protection applicable in your country. The data specified above only serve to describe the product. No statements concerning a certain condition or suitability for a certain application can be derived from our information. The given information does not release the user from the obligation of own judgement and verification. It must be remembered that our products are subject to a natural process of wear and aging.

©This document, as well as the data, specifications and other information set forth in it, are the exclusive property of Bosch Rexroth AG. Without their consent it may not be reproduced or given to third parties.

Spare parts list

Material number: R910993591
Drawing: R910993625
Designation: ROTARY GROUP

Bosch Rexroth AG
Service Hydraulics
Glockeraustrasse 4
89275 Elchingen
Germany

Status of version: 08/2025

Date: 16.09.2025

Page: 8

| Pos. | Material number | Designation | Quantity |
|------|-----------------|--------------------|----------|
| 1 | R902418043 | PISTON PAD | 9 UNIT |
| 2 | R902427816 | CYLINDER | 1 UNIT |
| 4 | R902503255 | RETAINING PLATE | 1 UNIT |
| 6 | R910979801 | RETAINING BALL | 1 UNIT |
| 7 | R910975251 | COMPRESSION SPRING | 1 UNIT |
| 9 | R902400741 | PRESSURE PIN | 3 UNIT |
| 10 | R909156218 | RETAINING RING | 1 UNIT |
| 11 | R902400742 | SUPPORTING DISC | 1 UNIT |

L = Assembly group D = Sealing element

Security notice:

Assembly, commissioning and operation, disassembly, service (including maintenance and repair) require basic mechanical/electrical/hydraulic/pneumatic knowledge, as well as knowledge of the appropriate technical terms. In order to ensure operating safety, these activities may therefore only be carried out by qualified technical personnel or an instructed person under the direction and supervision of qualified personnel. Qualified personnel are those who can recognize possible hazards and institute the appropriate safety measures due to their professional training, knowledge, and experience, as well as their understanding of the relevant conditions pertaining to the work to be done. Qualified personnel must observe the rules relevant to the subject area. Also observe the generally applicable, legal or otherwise binding regulations of the European or national legislation and the rules for the prevention of accidents and for environmental protection applicable in your country. The data specified above only serve to describe the product. No statements concerning a certain condition or suitability for a certain application can be derived from our information. The given information does not release the user from the obligation of own judgement and verification. It must be remembered that our products are subject to a natural process of wear and aging.

©This document, as well as the data, specifications and other information set forth in it, are the exclusive property of Bosch Rexroth AG. Without their consent it may not be reproduced or given to third parties.

Spare parts list

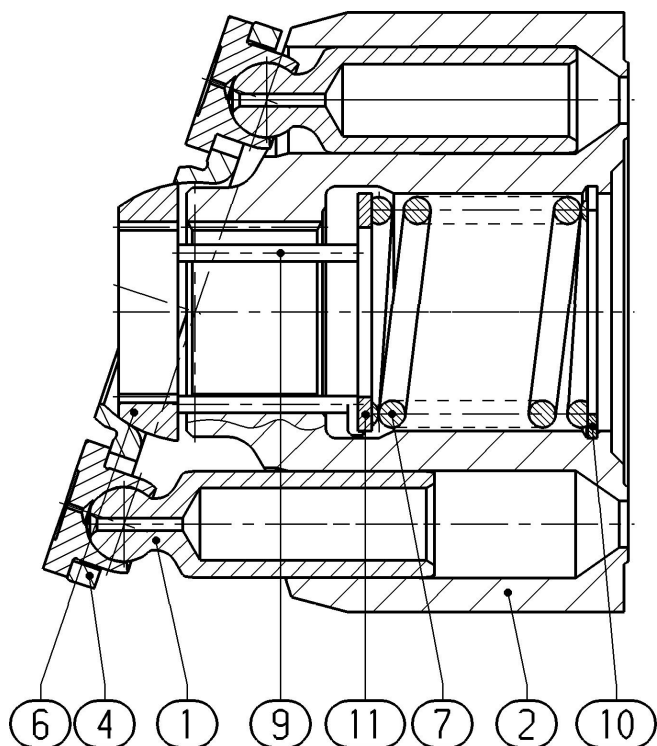
Material number: R910993591
Drawing: R910993625
Designation: ROTARY GROUP

Bosch Rexroth AG
Service Hydraulics
Glockeraustrasse 4
89275 Elchingen
Germany

Status of version: 08/2025

Date: 16.09.2025

Page: 9



L = Assembly group D = Sealing element

Security notice:

Assembly, commissioning and operation, disassembly, service (including maintenance and repair) require basic mechanical/electrical/hydraulic/pneumatic knowledge, as well as knowledge of the appropriate technical terms. In order to ensure operating safety, these activities may therefore only be carried out by qualified technical personnel or an instructed person under the direction and supervision of qualified personnel. Qualified personnel are those who can recognize possible hazards and institute the appropriate safety measures due to their professional training, knowledge, and experience, as well as their understanding of the relevant conditions pertaining to the work to be done. Qualified personnel must observe the rules relevant to the subject area. Also observe the generally applicable, legal or otherwise binding regulations of the European or national legislation and the rules for the prevention of accidents and for environmental protection applicable in your country. The data specified above only serve to describe the product. No statements concerning a certain condition or suitability for a certain application can be derived from our information. The given information does not release the user from the obligation of own judgement and verification. It must be remembered that our products are subject to a natural process of wear and aging.

©This document, as well as the data, specifications and other information set forth in it, are the exclusive property of Bosch Rexroth AG. Without their consent it may not be reproduced or given to third parties.

Spare parts list

Material number: R902454060
Drawing: R902453999
Designation: CONTROL VALVE

Bosch Rexroth AG
Service Hydraulics
Glockeraustrasse 4
89275 Elchingen
Germany

Status of version: 08/2025

Date: 16.09.2025

Page: 10

| Pos. | Material number | Designation | Quantity | |
|------|-----------------|-----------------------|----------|---|
| 1 | R902454000 | CONTROL VALVE | 1 UNIT | L |
| 2 | R902573525 | SEAL | 1 UNIT | D |
| 3 | R910900443 | SOCKET HEAD CAP SCREW | 4 UNIT | |
| 4 | R910764647 | SCREW PLUG | 1 UNIT | D |

L = Assembly group D = Sealing element

Security notice:

Assembly, commissioning and operation, disassembly, service (including maintenance and repair) require basic mechanical/electrical/hydraulic/pneumatic knowledge, as well as knowledge of the appropriate technical terms. In order to ensure operating safety, these activities may therefore only be carried out by qualified technical personnel or an instructed person under the direction and supervision of qualified personnel. Qualified personnel are those who can recognize possible hazards and institute the appropriate safety measures due to their professional training, knowledge, and experience, as well as their understanding of the relevant conditions pertaining to the work to be done. Qualified personnel must observe the rules relevant to the subject area. Also observe the generally applicable, legal or otherwise binding regulations of the European or national legislation and the rules for the prevention of accidents and for environmental protection applicable in your country. The data specified above only serve to describe the product. No statements concerning a certain condition or suitability for a certain application can be derived from our information. The given information does not release the user from the obligation of own judgement and verification. It must be remembered that our products are subject to a natural process of wear and aging.

©This document, as well as the data, specifications and other information set forth in it, are the exclusive property of Bosch Rexroth AG. Without their consent it may not be reproduced or given to third parties.

Spare parts list

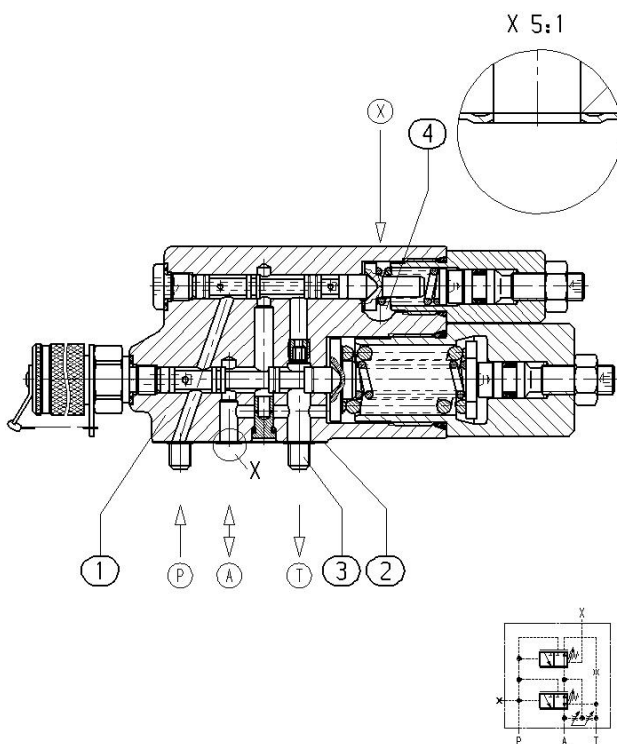
Material number: R902454060
Drawing: R902453999
Designation: CONTROL VALVE

Bosch Rexroth AG
Service Hydraulics
Glockeraustrasse 4
89275 Elchingen
Germany

Status of version: 08/2025

Date: 16.09.2025

Page: 11



L = Assembly group D = Sealing element

Security notice:

Assembly, commissioning and operation, disassembly, service (including maintenance and repair) require basic mechanical/electrical/hydraulic/pneumatic knowledge, as well as knowledge of the appropriate technical terms. In order to ensure operating safety, these activities may therefore only be carried out by qualified technical personnel or an instructed person under the direction and supervision of qualified personnel. Qualified personnel are those who can recognize possible hazards and institute the appropriate safety measures due to their professional training, knowledge, and experience, as well as their understanding of the relevant conditions pertaining to the work to be done. Qualified personnel must observe the rules relevant to the subject area. Also observe the generally applicable, legal or otherwise binding regulations of the European or national legislation and the rules for the prevention of accidents and for environmental protection applicable in your country. The data specified above only serve to describe the product. No statements concerning a certain condition or suitability for a certain application can be derived from our information. The given information does not release the user from the obligation of own judgement and verification. It must be remembered that our products are subject to a natural process of wear and aging.

©This document, as well as the data, specifications and other information set forth in it, are the exclusive property of Bosch Rexroth AG. Without their consent it may not be reproduced or given to third parties.

Spare parts list

Material number: R902454000
Drawing: R902453998
Designation: CONTROL VALVE

Bosch Rexroth AG
Service Hydraulics
Glockeraustrasse 4
89275 Elchingen
Germany

Status of version: 08/2025

Date: 16.09.2025

Page: 12

| Pos. | Material number | Designation | Quantity | |
|------|-----------------|--------------------|----------|---|
| 1 | R902434572 | VALVE HOUSING | 1 UNIT | |
| 2 | R902420112 | VALVE SPOOL | 1 UNIT | |
| 3 | R910920595 | SPRING DISK | 1 UNIT | |
| 4 | R902449500 | SPRING DISK | 1 UNIT | |
| 5 | R902451578 | SERVO UNIT | 1 UNIT | L |
| 6 | R902451580 | SERVO UNIT | 1 UNIT | L |
| 7 | R910900362 | WASHER | 1 UNIT | |
| 8 | R902451582 | ORIFICE | 1 UNIT | |
| 10 | R910920596 | COMPRESSION SPRING | 1 UNIT | |
| 11 | R910707031 | COMPRESSION SPRING | 1 UNIT | |
| 15 | R910925518 | NOZZLE | 1 UNIT | |
| 17 | R910933812 | SCREW PLUG | 1 UNIT | |
| 18 | R910900311 | VALVE SPOOL | 1 UNIT | |
| 19 | R910911509 | COMPRESSION SPRING | 1 UNIT | |
| 23 | R910642827 | BONDED SEAL RING | 2 UNIT | |
| 29 | R902410973 | TEST CONNECTION | 1 UNIT | |

L = Assembly group D = Sealing element

Security notice:

Assembly, commissioning and operation, disassembly, service (including maintenance and repair) require basic mechanical/electrical/hydraulic/pneumatic knowledge, as well as knowledge of the appropriate technical terms. In order to ensure operating safety, these activities may therefore only be carried out by qualified technical personnel or an instructed person under the direction and supervision of qualified personnel. Qualified personnel are those who can recognize possible hazards and institute the appropriate safety measures due to their professional training, knowledge, and experience, as well as their understanding of the relevant conditions pertaining to the work to be done. Qualified personnel must observe the rules relevant to the subject area. Also observe the generally applicable, legal or otherwise binding regulations of the European or national legislation and the rules for the prevention of accidents and for environmental protection applicable in your country. The data specified above only serve to describe the product. No statements concerning a certain condition or suitability for a certain application can be derived from our information. The given information does not release the user from the obligation of own judgement and verification. It must be remembered that our products are subject to a natural process of wear and aging.

©This document, as well as the data, specifications and other information set forth in it, are the exclusive property of Bosch Rexroth AG. Without their consent it may not be reproduced or given to third parties.

Spare parts list

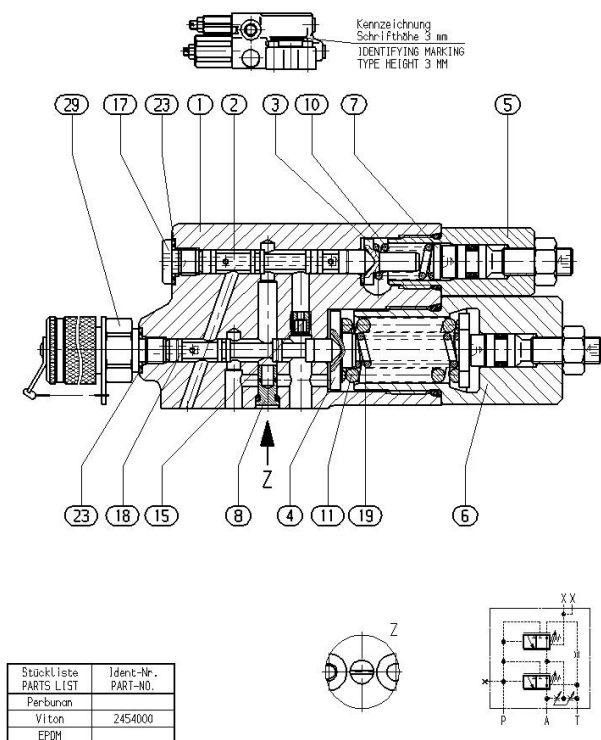
Material number: R902454000
Drawing: R902453998
Designation: CONTROL VALVE

Bosch Rexroth AG
Service Hydraulics
Glockeraustrasse 4
89275 Elchingen
Germany

Status of version: 08/2025

Date: 16.09.2025

Page: 13



L = Assembly group D = Sealing element

Security notice:

Assembly, commissioning and operation, disassembly, service (including maintenance and repair) require basic mechanical/electrical/hydraulic/pneumatic knowledge, as well as knowledge of the appropriate technical terms. In order to ensure operating safety, these activities may therefore only be carried out by qualified technical personnel or an instructed person under the direction and supervision of qualified personnel. Qualified personnel are those who can recognize possible hazards and institute the appropriate safety measures due to their professional training, knowledge, and experience, as well as their understanding of the relevant conditions pertaining to the work to be done. Qualified personnel must observe the rules relevant to the subject area. Also observe the generally applicable, legal or otherwise binding regulations of the European or national legislation and the rules for the prevention of accidents and for environmental protection applicable in your country. The data specified above only serve to describe the product. No statements concerning a certain condition or suitability for a certain application can be derived from our information. The given information does not release the user from the obligation of own judgement and verification. It must be remembered that our products are subject to a natural process of wear and aging.

©This document, as well as the data, specifications and other information set forth in it, are the exclusive property of Bosch Rexroth AG. Without their consent it may not be reproduced or given to third parties.

Spare parts list

Bosch Rexroth AG
Service Hydraulics
Glockeraustrasse 4
89275 Elchingen
Germany

Material number: R902451578
Drawing: R902451579
Designation: SERVO UNIT

Status of version: 08/2025

Date: 16.09.2025

Page: 14

| Pos. | Material number | Designation | Quantity |
|------|-----------------|-------------|----------|
| 1 | R902448797 | SCREW PLUG | 1 UNIT |
| 3 | R902445453 | STUD BOLT | 1 UNIT |
| 10 | R900013838 | HEXAGON NUT | 1 UNIT |
| 11 | R910946269 | BACKUP RING | 1 UNIT |
| 20 | R910080519 | O-RING | 1 UNIT |
| 21 | R910919314 | O-RING | 1 UNIT |

L = Assembly group D = Sealing element

Security notice:

Assembly, commissioning and operation, disassembly, service (including maintenance and repair) require basic mechanical/electrical/hydraulic/pneumatic knowledge, as well as knowledge of the appropriate technical terms. In order to ensure operating safety, these activities may therefore only be carried out by qualified technical personnel or an instructed person under the direction and supervision of qualified personnel. Qualified personnel are those who can recognize possible hazards and institute the appropriate safety measures due to their professional training, knowledge, and experience, as well as their understanding of the relevant conditions pertaining to the work to be done. Qualified personnel must observe the rules relevant to the subject area. Also observe the generally applicable, legal or otherwise binding regulations of the European or national legislation and the rules for the prevention of accidents and for environmental protection applicable in your country. The data specified above only serve to describe the product. No statements concerning a certain condition or suitability for a certain application can be derived from our information. The given information does not release the user from the obligation of own judgement and verification. It must be remembered that our products are subject to a natural process of wear and aging.

©This document, as well as the data, specifications and other information set forth in it, are the exclusive property of Bosch Rexroth AG. Without their consent it may not be reproduced or given to third parties.

Spare parts list

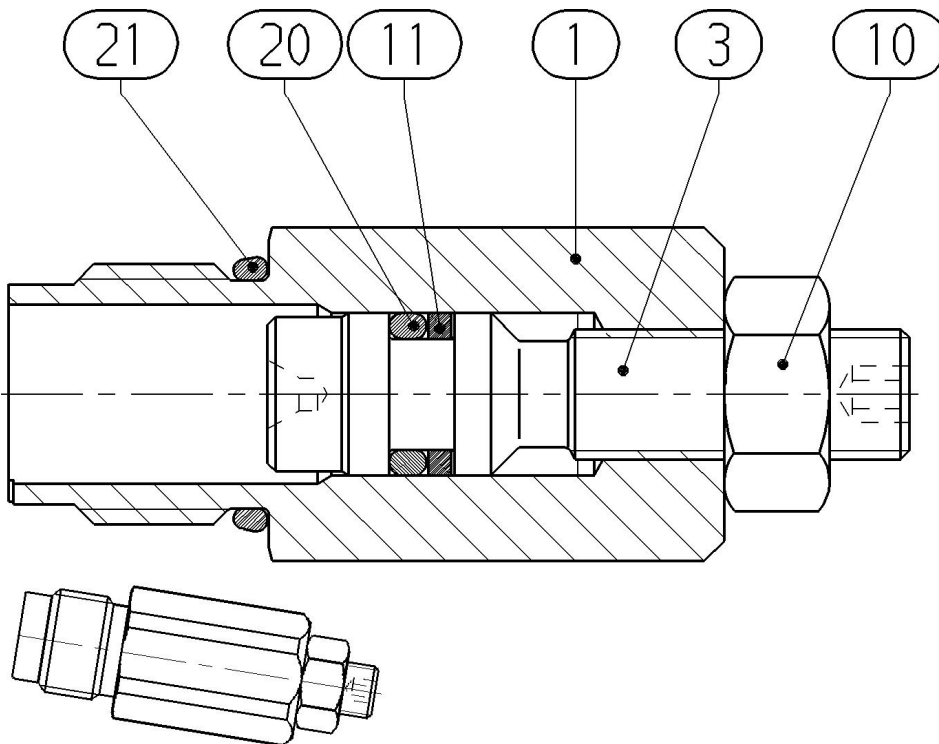
Material number: R902451578
Drawing: R902451579
Designation: SERVO UNIT

Bosch Rexroth AG
Service Hydraulics
Glockeraustrasse 4
89275 Elchingen
Germany

Status of version: 08/2025

Date: 16.09.2025

Page: 15



L = Assembly group D = Sealing element

Security notice:

Assembly, commissioning and operation, disassembly, service (including maintenance and repair) require basic mechanical/electrical/hydraulic/pneumatic knowledge, as well as knowledge of the appropriate technical terms. In order to ensure operating safety, these activities may therefore only be carried out by qualified technical personnel or an instructed person under the direction and supervision of qualified personnel. Qualified personnel are those who can recognize possible hazards and institute the appropriate safety measures due to their professional training, knowledge, and experience, as well as their understanding of the relevant conditions pertaining to the work to be done. Qualified personnel must observe the rules relevant to the subject area. Also observe the generally applicable, legal or otherwise binding regulations of the European or national legislation and the rules for the prevention of accidents and for environmental protection applicable in your country. The data specified above only serve to describe the product. No statements concerning a certain condition or suitability for a certain application can be derived from our information. The given information does not release the user from the obligation of own judgement and verification. It must be remembered that our products are subject to a natural process of wear and aging.

©This document, as well as the data, specifications and other information set forth in it, are the exclusive property of Bosch Rexroth AG. Without their consent it may not be reproduced or given to third parties.

Spare parts list

Bosch Rexroth AG
Service Hydraulics
Glockeraustrasse 4
89275 Elchingen
Germany

Material number: R902451580
Drawing: R902451581
Designation: SERVO UNIT

Status of version: 08/2025

Date: 16.09.2025

Page: 16

| Pos. | Material number | Designation | Quantity |
|------|-----------------|-------------|----------|
| 1 | R902474069 | SCREW PLUG | 1 UNIT |
| 3 | R902445453 | STUD BOLT | 1 UNIT |
| 4 | R902417465 | WASHER | 1 UNIT |
| 10 | R900013838 | HEXAGON NUT | 1 UNIT |
| 11 | R910946269 | BACKUP RING | 1 UNIT |
| 20 | R910080519 | O-RING | 1 UNIT |
| 21 | R910919322 | O-RING | 1 UNIT |

L = Assembly group D = Sealing element

Security notice:

Assembly, commissioning and operation, disassembly, service (including maintenance and repair) require basic mechanical/electrical/hydraulic/pneumatic knowledge, as well as knowledge of the appropriate technical terms. In order to ensure operating safety, these activities may therefore only be carried out by qualified technical personnel or an instructed person under the direction and supervision of qualified personnel. Qualified personnel are those who can recognize possible hazards and institute the appropriate safety measures due to their professional training, knowledge, and experience, as well as their understanding of the relevant conditions pertaining to the work to be done. Qualified personnel must observe the rules relevant to the subject area. Also observe the generally applicable, legal or otherwise binding regulations of the European or national legislation and the rules for the prevention of accidents and for environmental protection applicable in your country. The data specified above only serve to describe the product. No statements concerning a certain condition or suitability for a certain application can be derived from our information. The given information does not release the user from the obligation of own judgement and verification. It must be remembered that our products are subject to a natural process of wear and aging.

©This document, as well as the data, specifications and other information set forth in it, are the exclusive property of Bosch Rexroth AG. Without their consent it may not be reproduced or given to third parties.

Spare parts list

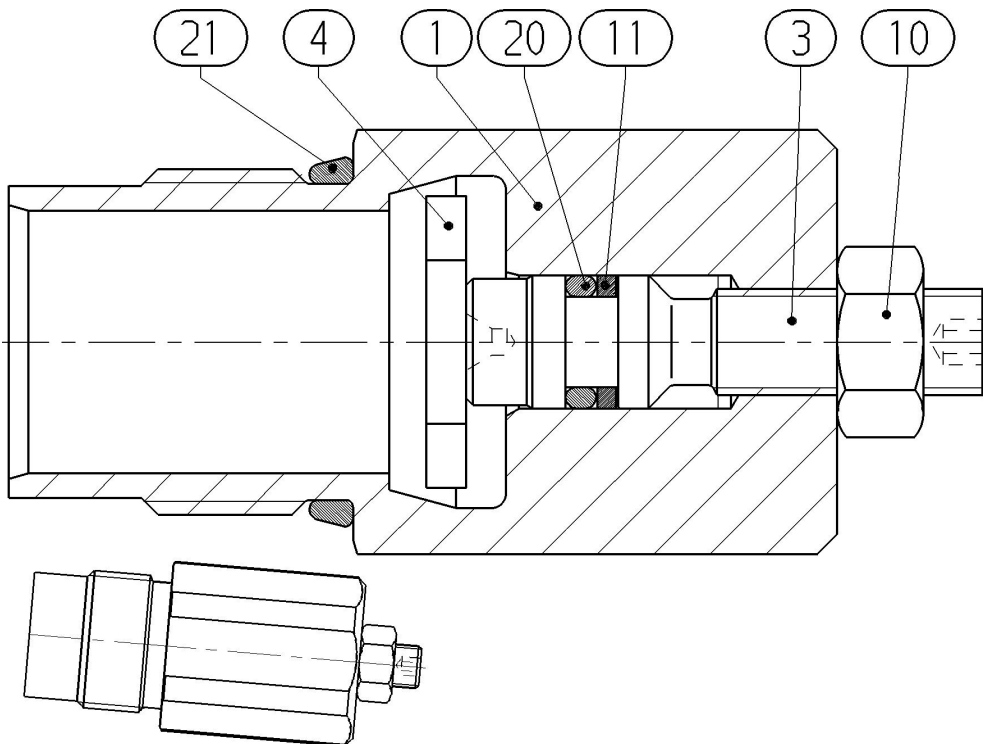
Material number: R902451580
Drawing: R902451581
Designation: SERVO UNIT

Bosch Rexroth AG
Service Hydraulics
Glockeraustrasse 4
89275 Elchingen
Germany

Status of version: 08/2025

Date: 16.09.2025

Page: 17



L = Assembly group D = Sealing element

Security notice:

Assembly, commissioning and operation, disassembly, service (including maintenance and repair) require basic mechanical/electrical/hydraulic/pneumatic knowledge, as well as knowledge of the appropriate technical terms. In order to ensure operating safety, these activities may therefore only be carried out by qualified technical personnel or an instructed person under the direction and supervision of qualified personnel. Qualified personnel are those who can recognize possible hazards and institute the appropriate safety measures due to their professional training, knowledge, and experience, as well as their understanding of the relevant conditions pertaining to the work to be done. Qualified personnel must observe the rules relevant to the subject area. Also observe the generally applicable, legal or otherwise binding regulations of the European or national legislation and the rules for the prevention of accidents and for environmental protection applicable in your country. The data specified above only serve to describe the product. No statements concerning a certain condition or suitability for a certain application can be derived from our information. The given information does not release the user from the obligation of own judgement and verification. It must be remembered that our products are subject to a natural process of wear and aging.

©This document, as well as the data, specifications and other information set forth in it, are the exclusive property of Bosch Rexroth AG. Without their consent it may not be reproduced or given to third parties.